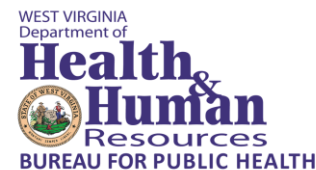


# West Virginia State Bureau for Public Health

Public Health Impact Task Force  
West Virginia State University  
May 13, 2015



# Meeting the Public Health Needs of All WV Residents

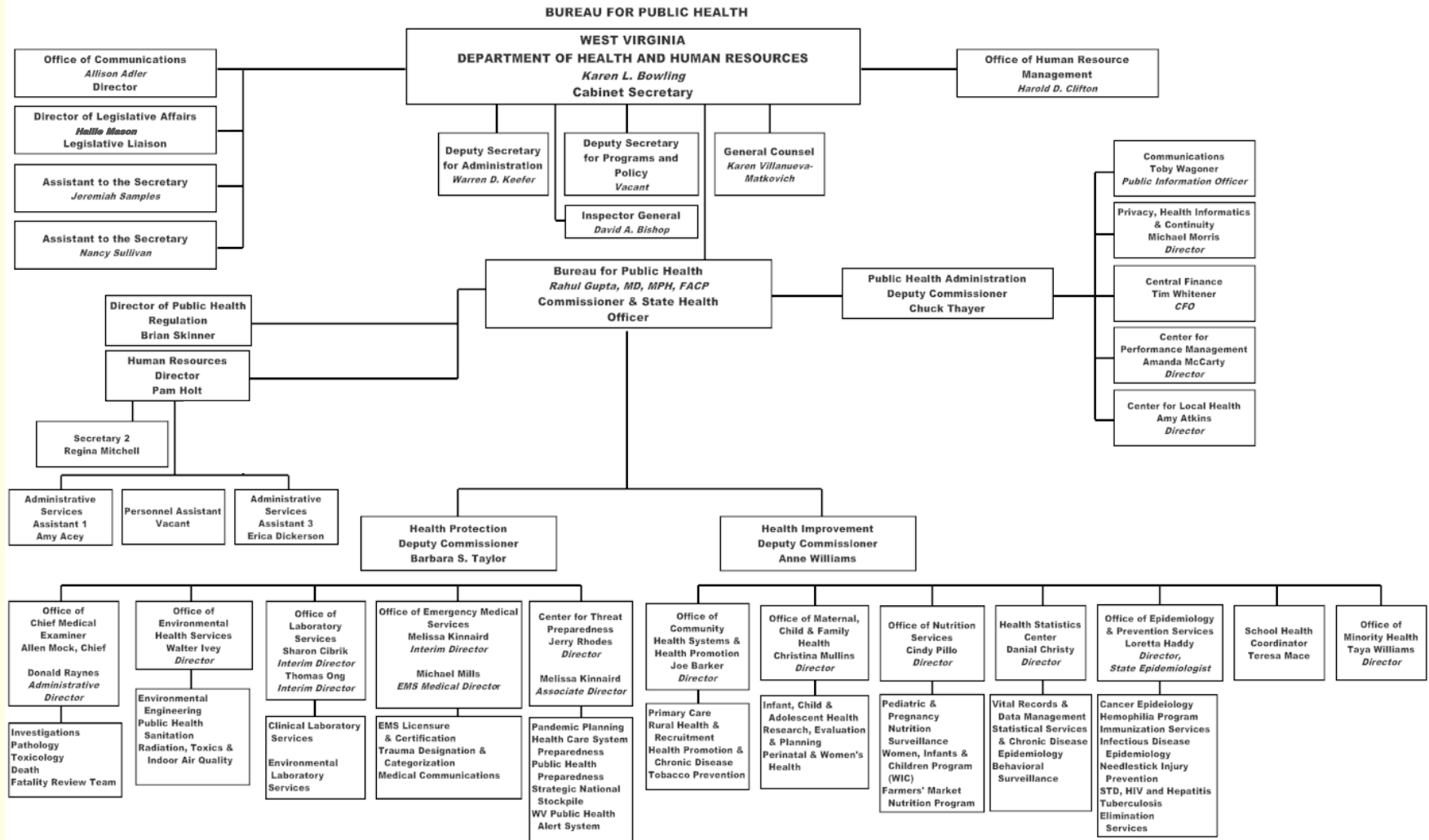
The **Vision** of the Bureau for Public Health is to have healthy West Virginians in healthy communities.

Ensuring  
“consistency”  
in services  
to residents  
across all 55  
counties.

The **Mission** is to help shape the environments where West Virginians can be safe and healthy in their communities.

A community is  
where you live,  
work, walk, pray,  
play, eat and sleep.

# Organization Structure



## State Health Officer and Commissioner

### Administration

- Accountants
- Buyers
- Grants Specialists
- Monitors and Auditors
- Human Resources Managers
- Public Health Attorneys

### Health Protection

- Forensic Pathologists
- Engineers
- Nurses
- Geologists
- Chemists
- Physicians
- Microbiologists
- Sanitarians
- Radiological Health Specialists
- CDC Assignees

### Health Improvement

- Nurses
- Social Workers
- Epidemiologists
- Physicians
- Entomologists
- Statisticians
- Health Specialists
- CDC Assignees

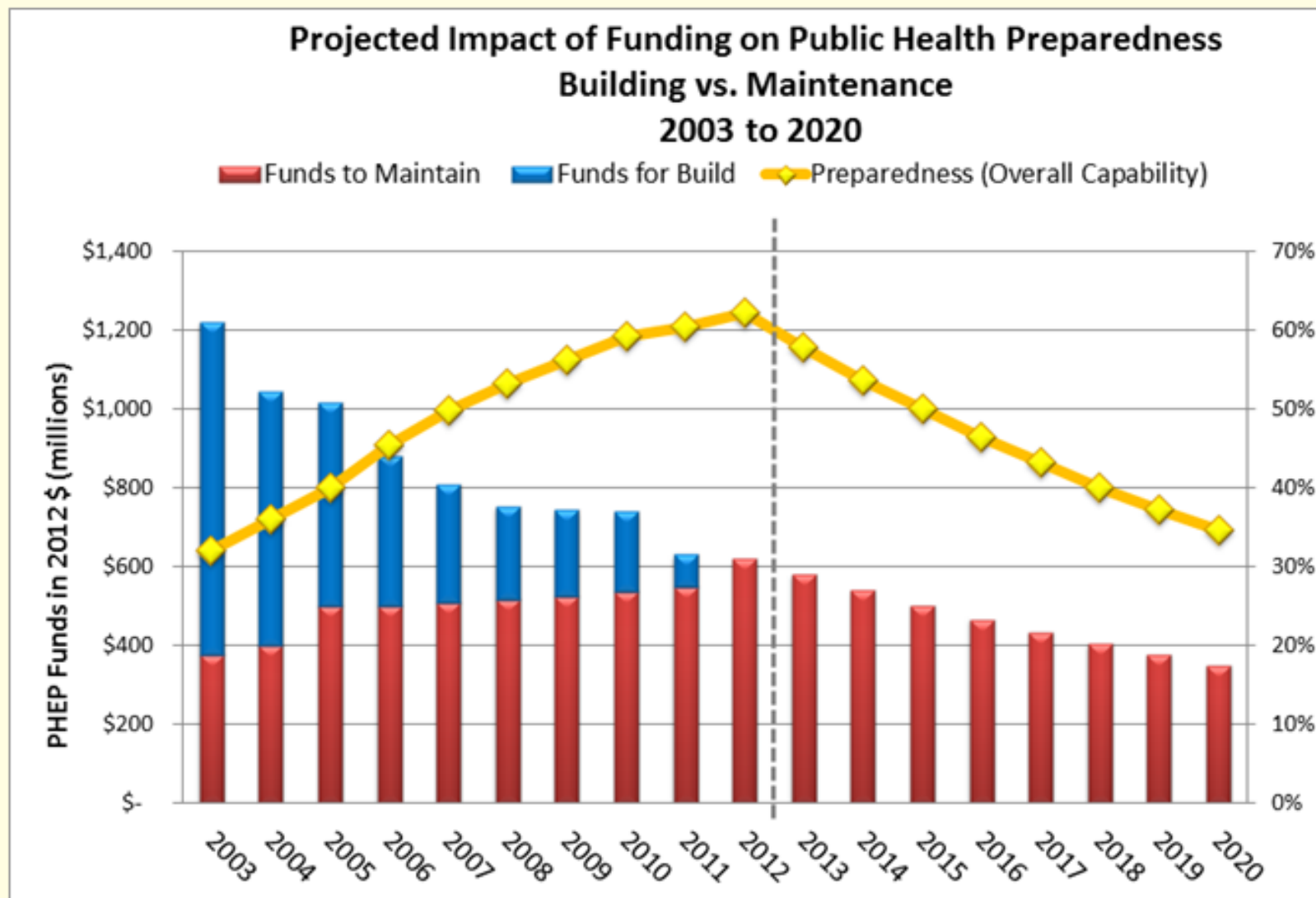
**Administrators, Program Managers, Public Information Specialists,  
Programmers, Data Analysts, Support Staff**



## **Current Trends and Expectations**

- Declining federal and state public health funds.
- Changes in funding priorities.
- ACA and Medicaid expansion.
- Payment reform - Value and Performance Based Reimbursement.

# Example: Threat Preparedness Projections








# Performance Management

- Data informed performance evaluation.
- Federal funding requirements and conditions.
- Public Health Accreditation.

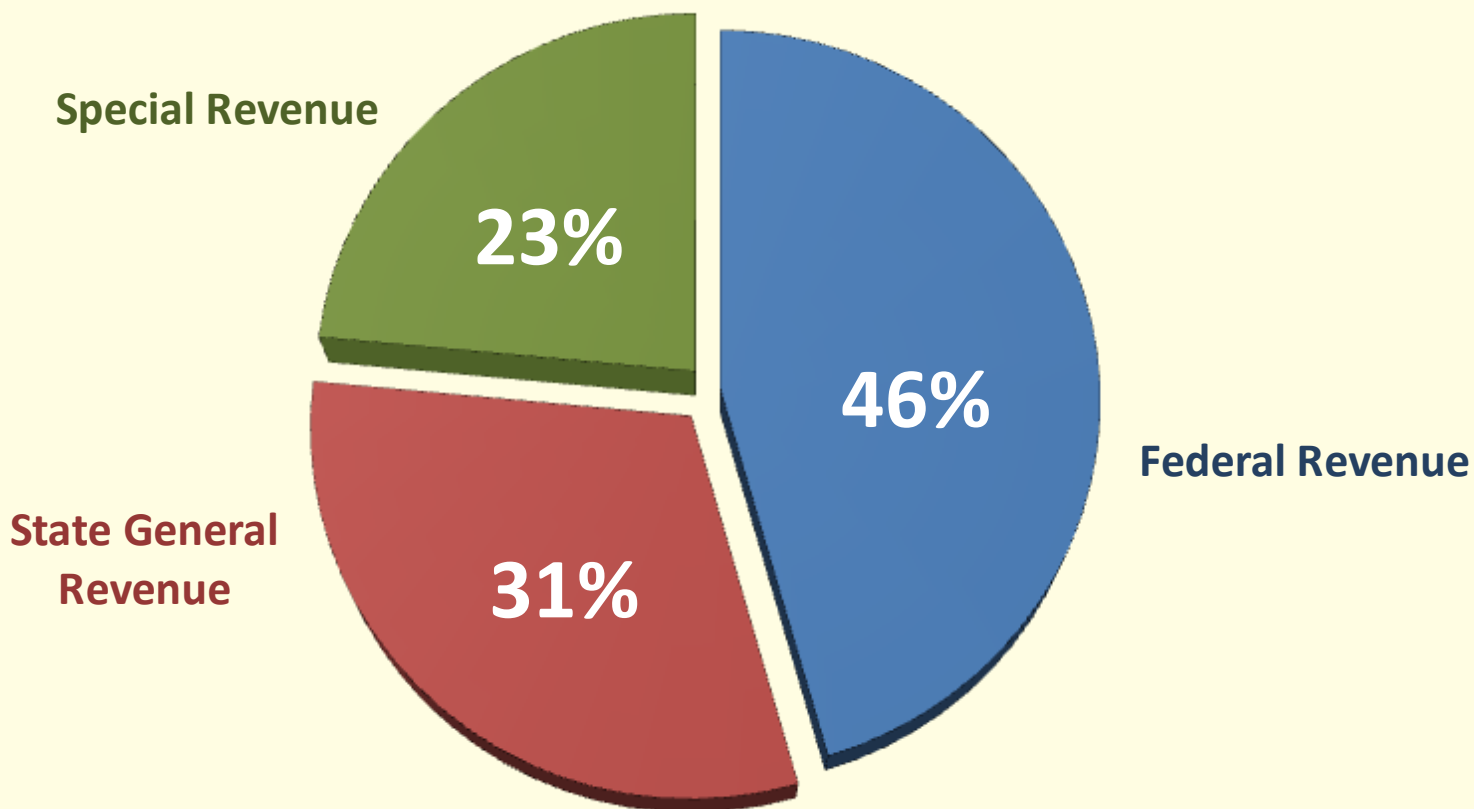
## Bureau for Public Health Performance Management Indicators

### Environmental Health Services - Public Health Sanitation

Performance Measure	Previous Period	Current Period	Target Current Period	Trend Direction	Number of Periods	Frequency
<b>COMMUNITY HEALTH OUTCOME Goals: Measures</b>						
<a href="#"><u>% inspection results showing lower food borne illness risks than 2012 baseline</u></a>	0%	0%	5%		4	Quarterly
<b>COMMUNITY IMPLEMENTATION Objectives: Measures</b>						
<a href="#"><u>% follow-up inspections related to identified risks conducted within required times</u></a>	85%	85%	100%		4	Quarterly
<a href="#"><u>% inspections with exit interviews &amp; properly signed acknowledgments</u></a>	100%	100%	100%		4	Quarterly
<b>COMMUNITY PROCESS &amp; LEARNING Objectives: Measures</b>						
<a href="#"><u>Initiative: Quarterly analysis of data from FDA collection tool to determine necessary changes and improvements in the food program</u></a>	1	1	1		4	Quarterly
<a href="#"><u>Initiative: Conduct Annual Policy review to determine needed policy change.</u></a>		1	1		1	Annually

# BPH Funding

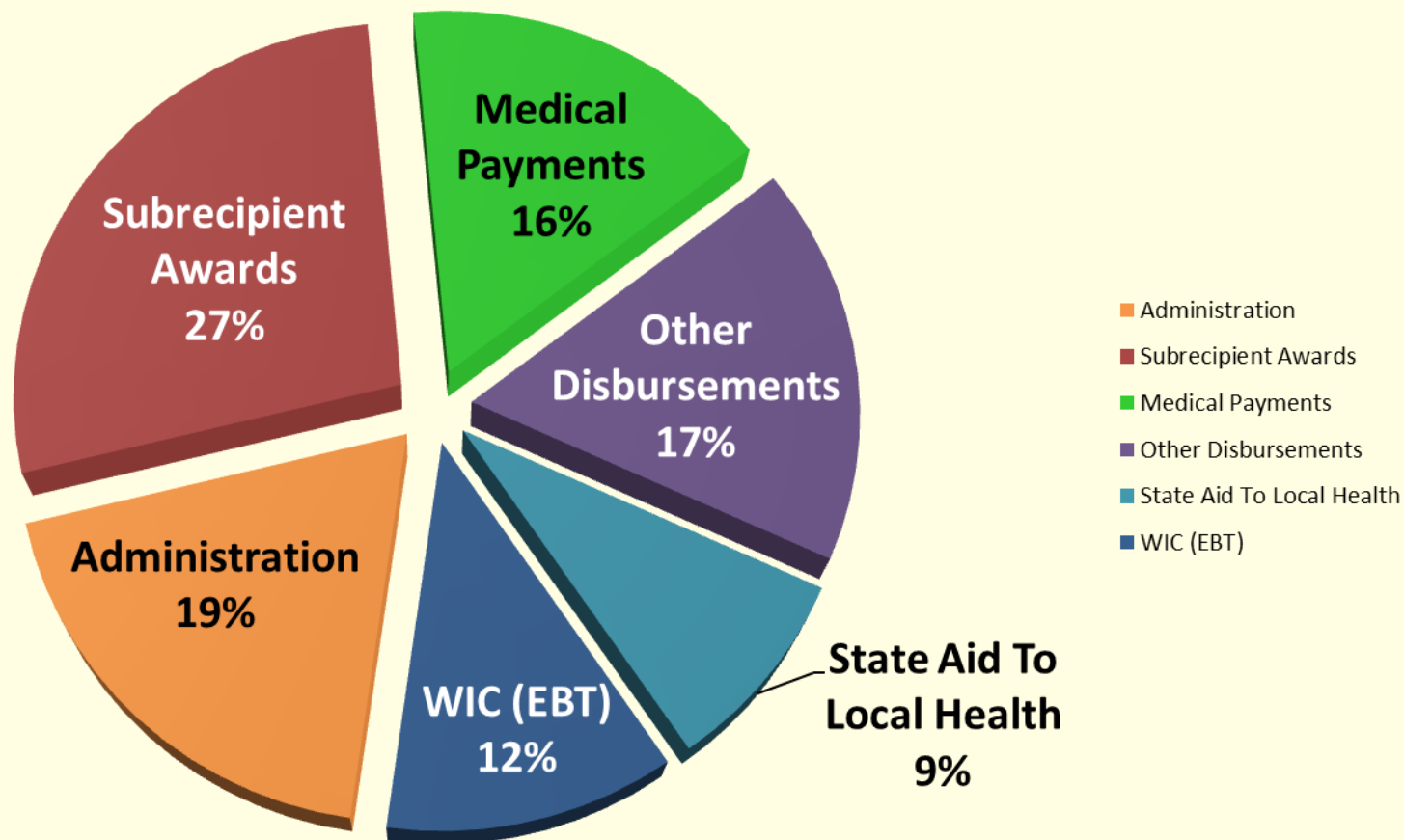
**BPH Expenditures By Funding Source  
(SFY 2014)**



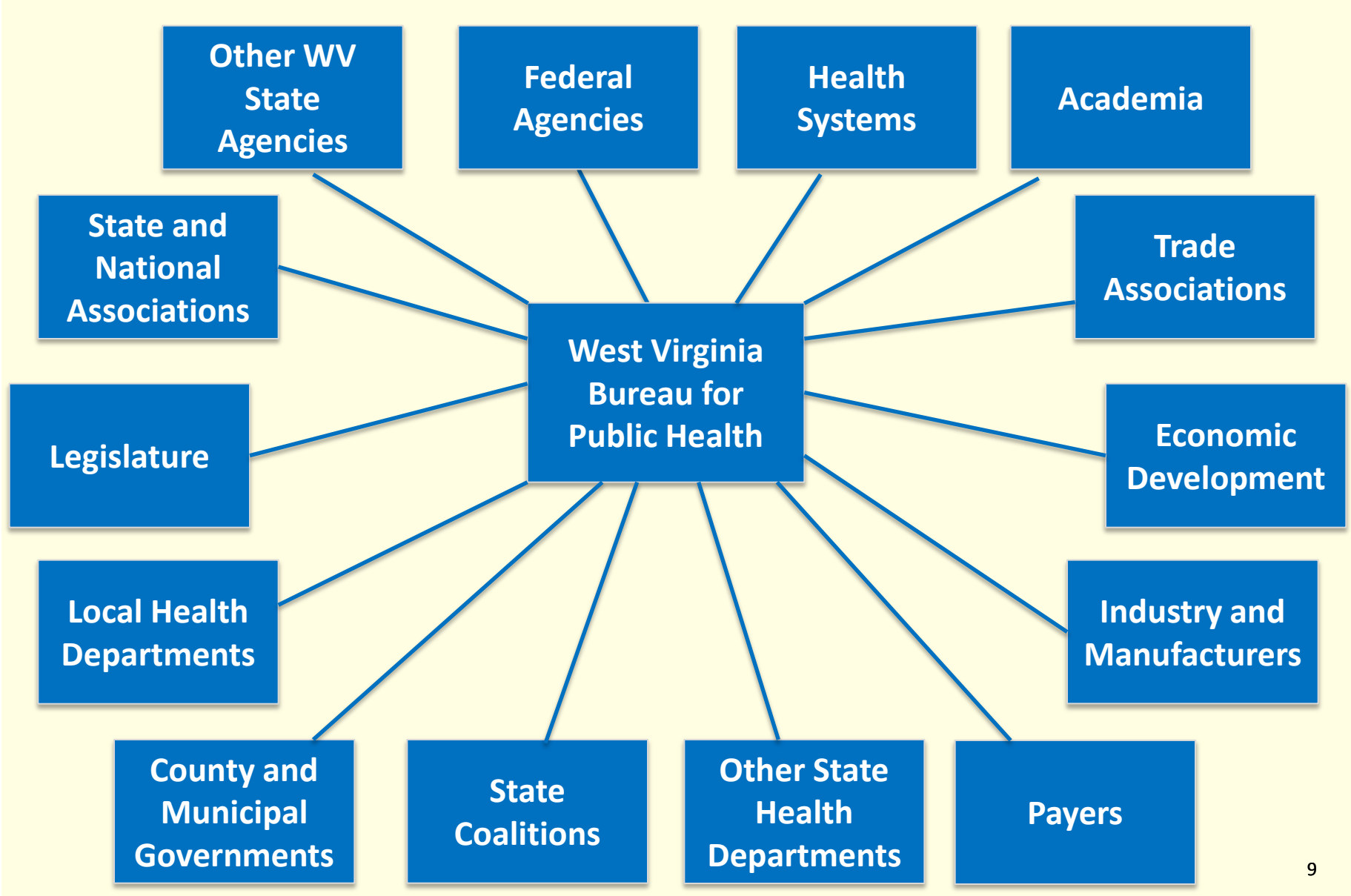


# BPH Expenditures

**BPH Expenditures by Budget Category  
(SFY 2014)**



# Partnerships



## Providing Comprehensive Laboratory Services

Operates under national public health laboratory standards to perform clinical diagnostic and environmental testing, as well as chemical and biological agent testing.



### Select 2014 Data

- 82,679 total clinical specimens received, 1,530,433 clinical tests completed.
- 1,428 Rabies and West Nile specimens, 1,371 tests completed.
- 262 Bioterrorism Samples received.
- 1,921 Drinking Water samples received, 2021 tests completed.
- 13,285 Environmental Micro samples received, 9902 tests completed.
- 2,275 Milk Samples Received, 7,818 tests completed.

## Protection From Adverse Environmental Factors



### Current Activities

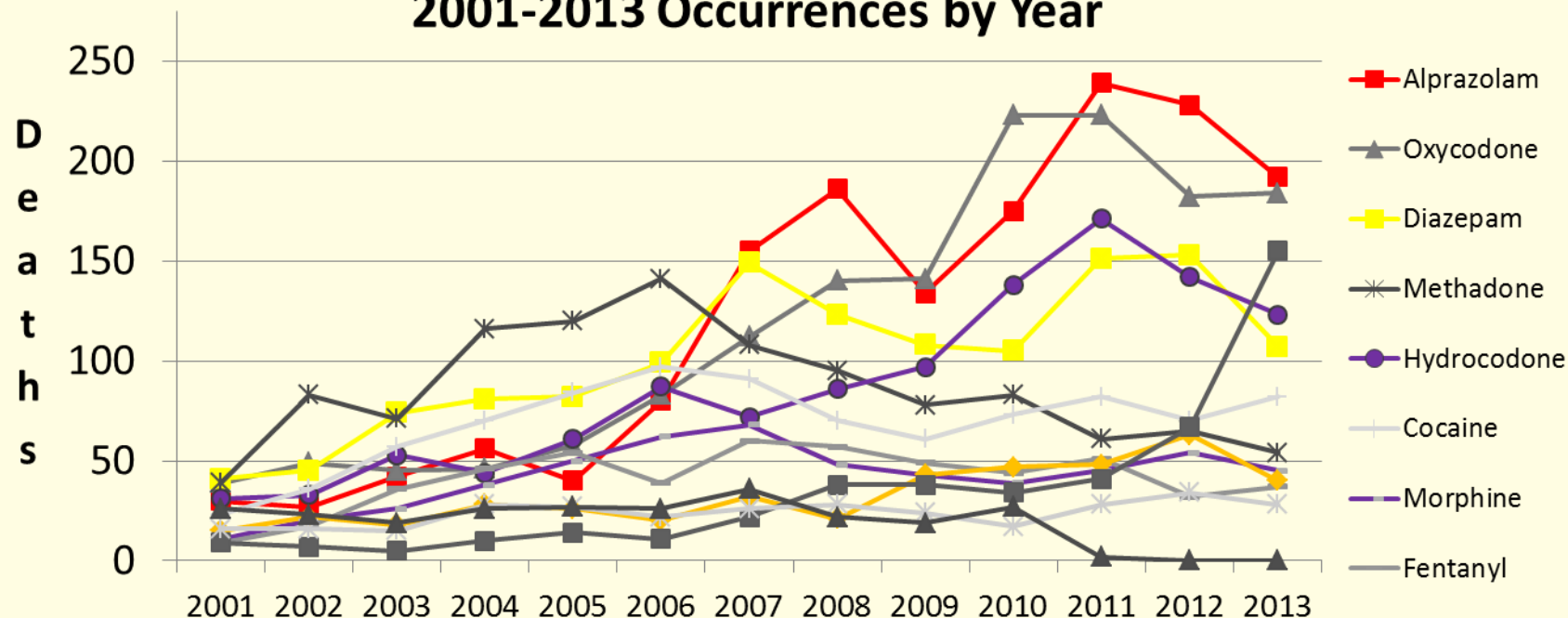
- Issues 167 bottled water distributions permits to facilities in 13 countries and 30 states annually.
- Over \$75 Million to drinking water projects across the state affecting 187,534 people from 2011 through 2014.
- Inspect and regulate 90 Grade “A” dairy farms.
- Permits 150 large quantity infectious medical waste generators.
- Inspects and regulates 110 food processing plants.
- Trains all registered public health sanitarians.

# Serving West Virginia Residents

## Chief Medical Examiner

Conducts comprehensive forensic death investigation utilizing forensic pathology, toxicology and death investigation protocols.

### WV Drug Overdose Deaths for Selected Drugs 2001-2013 Occurrences by Year



## Supporting Maternal, Child and Family Health

Creates comprehensive systems of care for women , infants, children and adolescents focused on the full spectrum of public health services from prevention to clinical treatment programs.



### Current Trends

- The Family Planning and Breast and Cervical Cancer Screening Programs (BCCSP) estimate a 57% reduction in utilization of cervical cancer screening services from 2013.
- BCCSP is estimated to screen 4,700 women this year, compared to 14,000 women two years ago. This is an estimated 67% reduction.
- Home Visitation program funding has increased dramatically from \$1 Million in 2010 to \$17 Million in 2015.

## Increasing Access to Health Care in Rural Communities

Operates under national guidelines and best practice programs to recruit and retain health care professionals in rural communities.



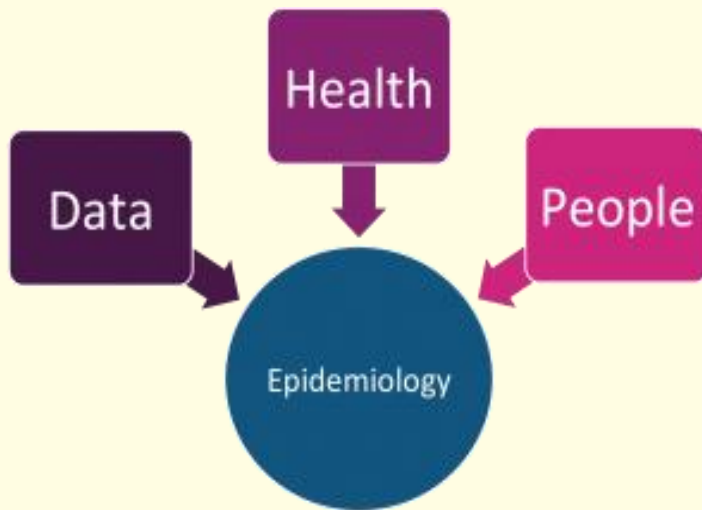
### Select 2014 Data

- Conducts Health Professional Shortage Area (HPSA) designation assessments.
- The J-1 Visa Waiver Program placed 32 health care providers in 2014.
- State Loan Repayment Programs placed 50 health care providers in underserved or rural areas in 2014.



## Comprehensive Statewide Epidemiological Services

Oversees statewide surveillance, investigation, and tracking of: required reportable conditions; communicable diseases; chronic diseases; maternal and child health indicators; and environmental related illnesses.



### Current Activities

- BPH employs a wide range of specialized epidemiologists, including infectious disease, environmental, maternal and child health, disaster and chronic disease epidemiologists.
- Maintains the statewide WV Immunization Information System.
- Investigate an average of 134 outbreaks per year since 2009.



# Serving West Virginia Residents

## Emergency Medical Services

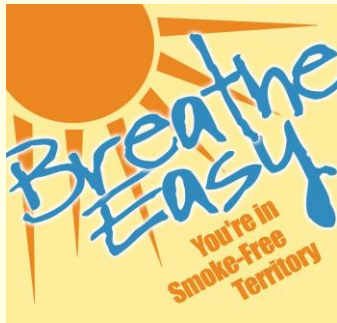
Increase the quality of emergency care for West Virginians by overseeing emergency medical services and systems.



### Current Activities

- State authority for Trauma Center designation.
- Certifies over 8,000 EMS personnel such as paramedics and EMTs.
- Inspects, licenses and regulates EMS agencies.
- Oversees interoperable radio communications network infrastructure.

## Reduce The Incidence of Preventable Disease and Death



### Current Trends and Activities

- Policy, environment and systems change.
- Evidence based interventions.
- Community coordinated care systems.
- Clinical and public health linkages.
- Social and Economic determinants of health.

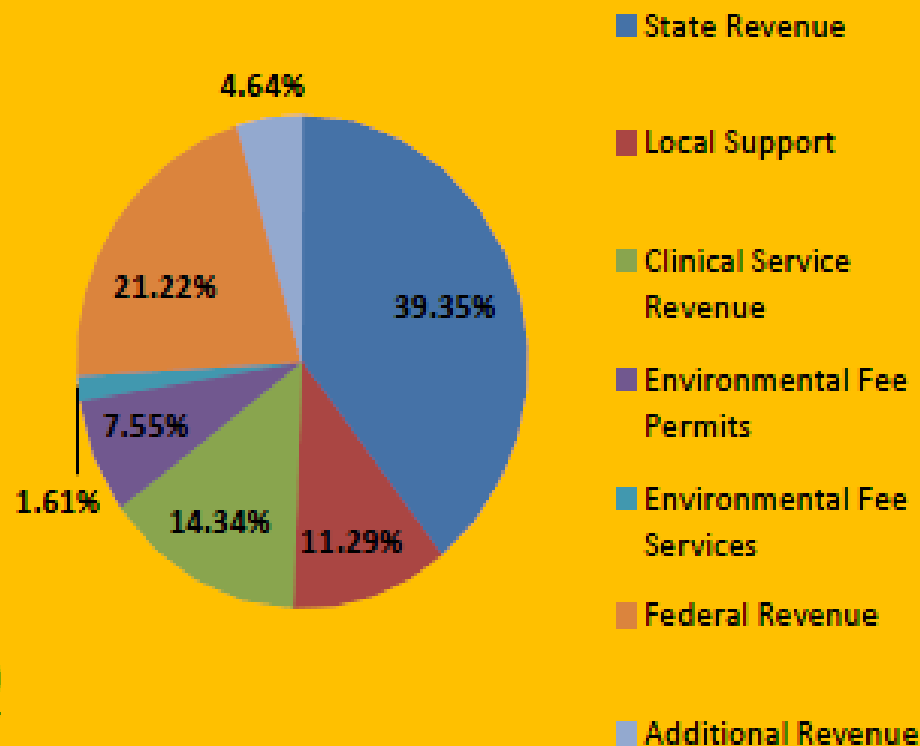
- **Public Health is evolving - Public Health System must adapt.**
- **Health In All Policies approach.**
- **Maximize effective use of decreasing public health funds.**
- **Consistency in administration of public health services and programs.**
- **Focus on performance management, health outcomes, and accountability.**

# Local Health Projected Budgets for Fiscal Year 2015

## Projected Revenues

State Revenue (A)	\$16,697,292
County Commission (B)	\$ 2,151,531
County Levy (C)	\$ 2,009,335
City Levy (D)	\$ 6,000
Municipalities (E)	\$ 324,800
Board of Education (F)	\$ 298,150
Clinical Service Revenue (G)	\$ 6,082,599
Environmental Fee Permits (H)	\$ 3,203,173
Environmental Fee Services (I)	\$ 684,620
Federal Revenue (J)	\$ 9,003,593
Additional Revenue (K)	\$ 1,967,072
<b>Total</b>	<b>\$42,428,165</b>

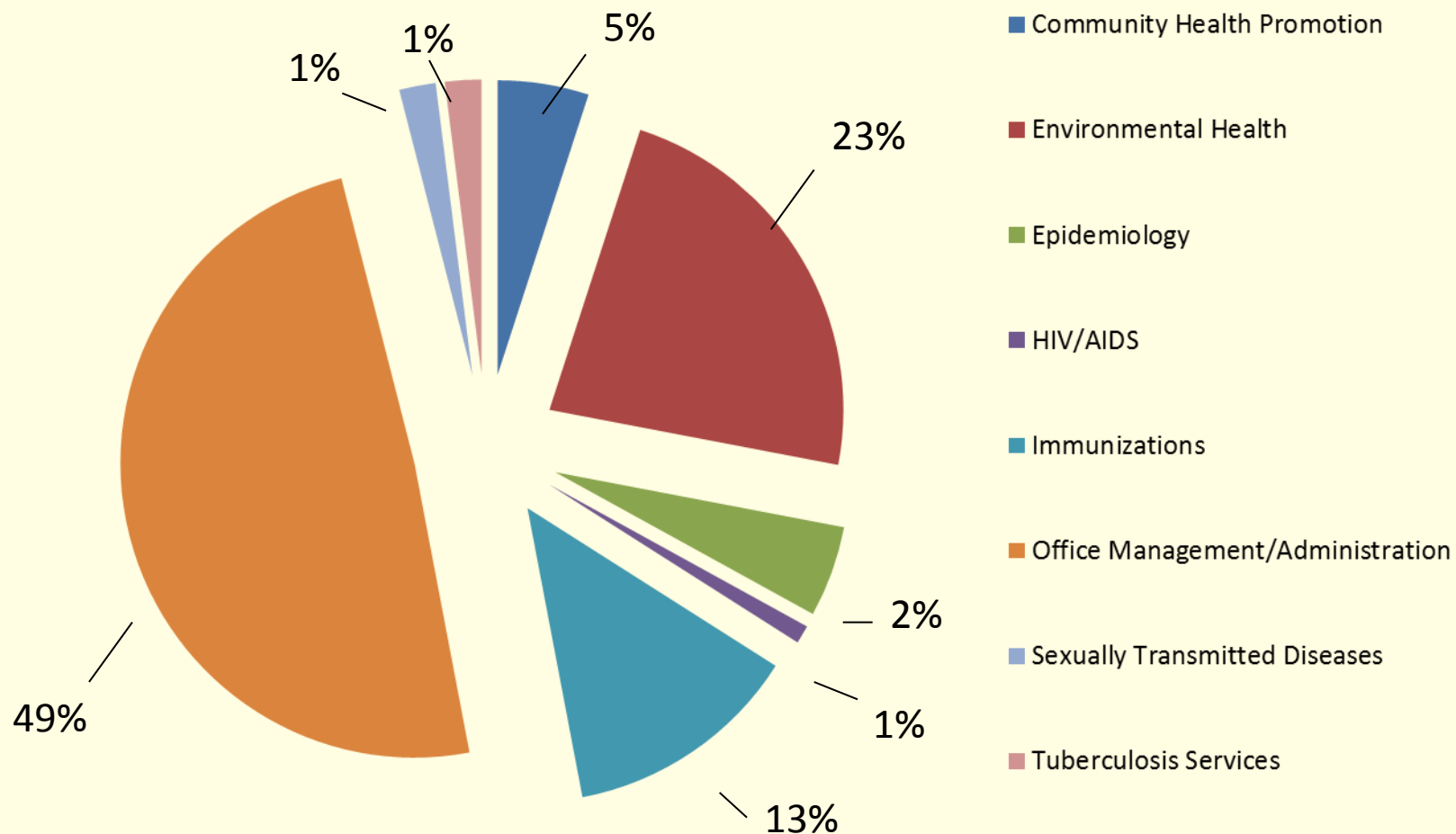
## Projected Revenues by Funding Source



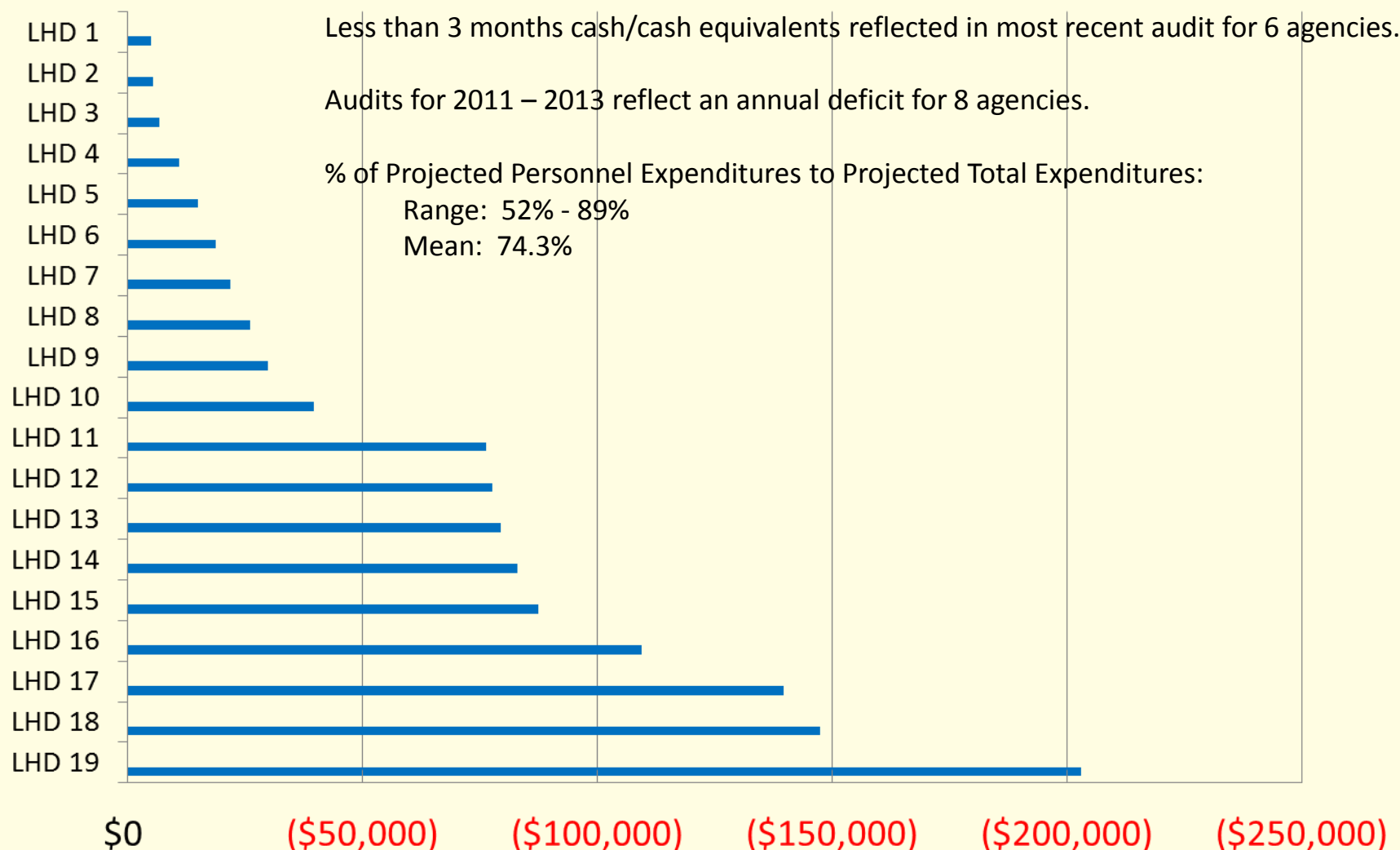
## Projected Expenditures

Classified Service Personnel (L)	\$30,242,640
Current Operating Expenditures (M)	\$11,528,637
Capital Outlay Expenditures (N)	\$ 887,628
<b>Total</b>	<b>\$42,658,905</b>

# Local Health Projected Expenditures: Basic Public Health Services

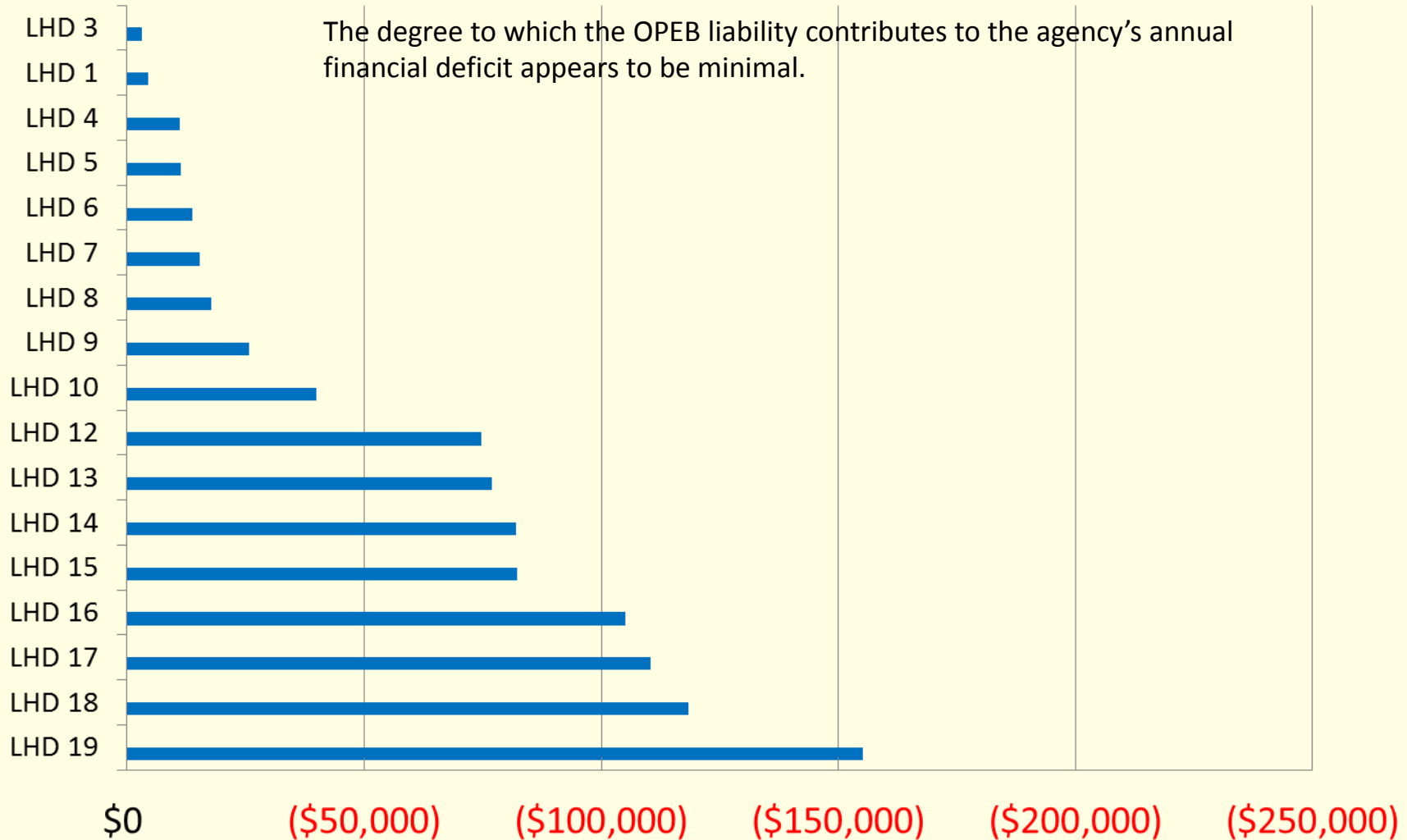


# Summary of Local Health Departments Operating with a Deficit



Data Source: Published Audits on File <http://www.wvsao.gov/CID/pdfAuditWebApp/>

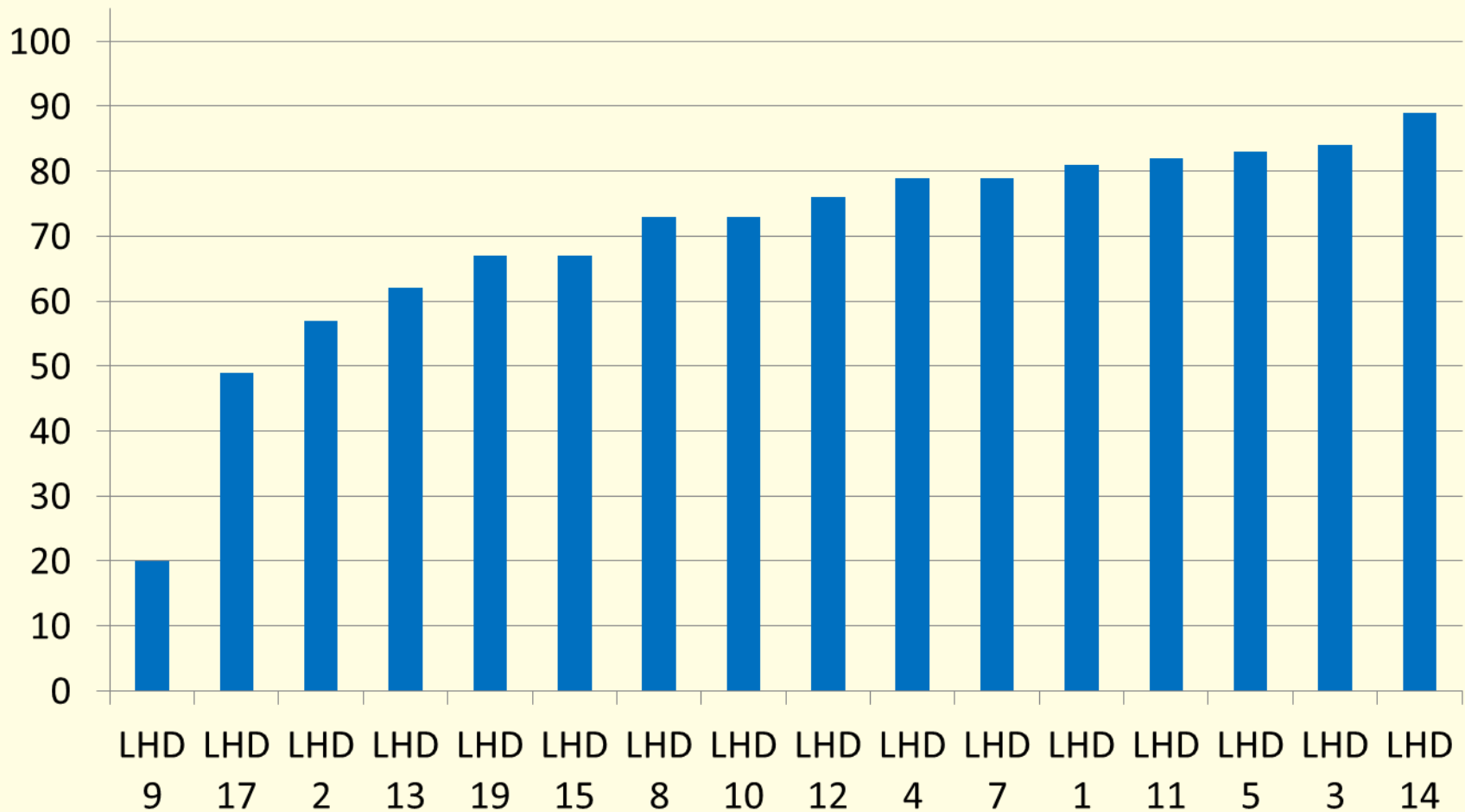
# Summary of Local Health Departments Operating with a Deficit (Estimated OPEB Liability Removed)



Data Source: Published Audits on File <http://www.wvsao.gov/CID/pdfAuditWebApp/>

# Summary of Local Health Department Personnel Expenditures

## Percent of Personnel Expenditures to Total Expenditures



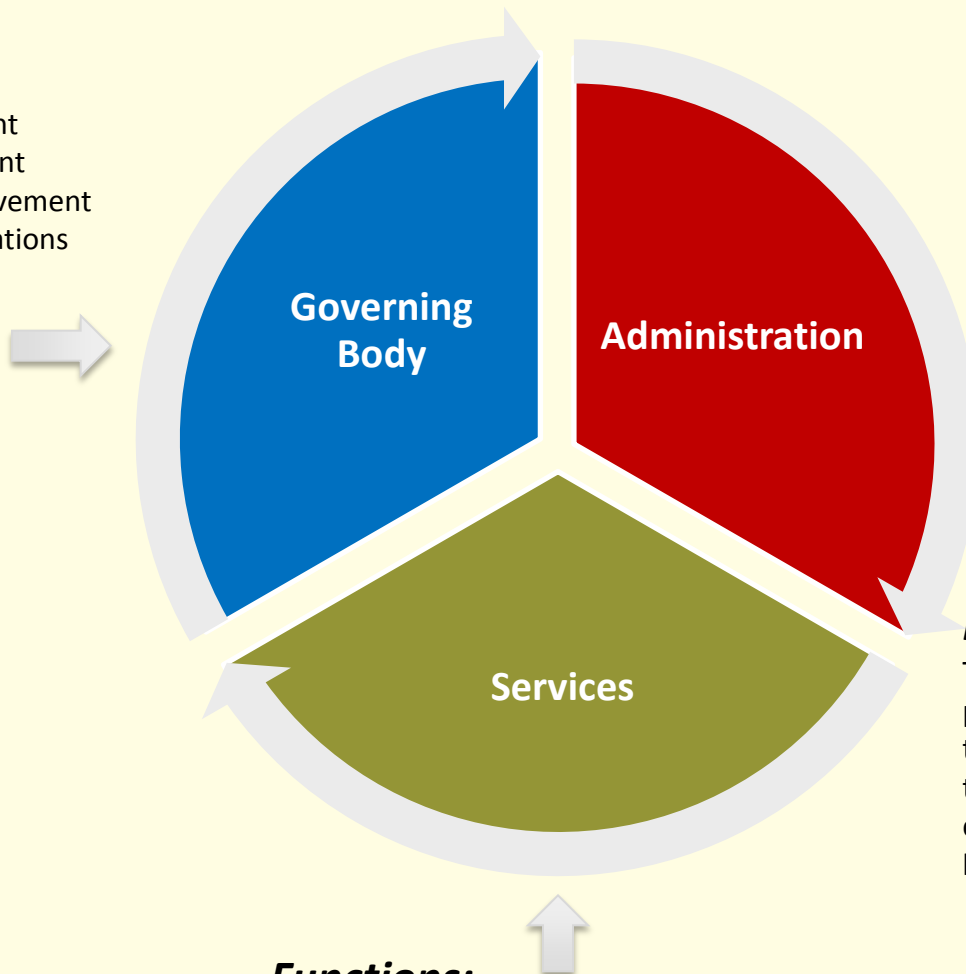
Data Source: Personal services expenses as reported in the most recent published audit. Personal services were not able to be determined for LHD 6, 16 and 18.



# The West Virginia Public Health System

## **Functions:**

Legal Authority  
Policy Development  
Partner Engagement  
Continuous Improvement  
Oversight of Operations



## **Functions:**

Develop and implement local health services  
Assure compliance with state and federal laws  
Interpret program needs and objectives  
Responsible for efficient and effective utilization of fiscal and personnel resources  
Reports to local board

## **Intent of the System:**

To assure public health services are provided to all citizens. The authority of the Bureau for Public Health is to **monitor** the administration, operation and coordination of local boards of health and local health officers.

## **Functions:**

To prevent and control epidemics (infectious diseases)  
Promote a safe and health environment (environmental health)  
Promote health lifestyles (community health promotion)

# Powers and Duties of Public Health Agencies

- Public Health Governance
- State Public Health System



- **Local Boards of Health**
  - Authority to Create, Establish and Maintain
  - Powers and Duties of Local Boards of Health
  - Financial Responsibilities



# Powers and Duties of Public Health Agencies

- **State of West Virginia**

- Powers and Duties of the Commissioner
- Powers and Duties of the Commissioner Over Local Health
- Contributions from Legislative Appropriations and Receipt and Disbursement of Federal Aid



# Powers and Duties of Public Health Agencies

- **Summary**

- Authority
- Structure
- State and Local Public Health Relationships

